

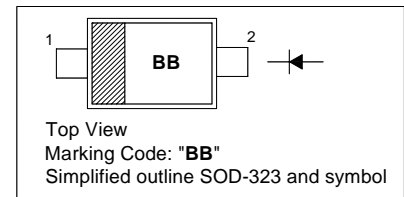
SILICON SCHOTTKY BARRIER DIODE

Features

- Small surface mounting type
- Ultra low V_F
- High reliability

PINNING

PIN	DESCRIPTION
1	Cathode
2	Anode



Absolute Maximum Ratings ($T_a = 25^\circ\text{C}$)

Parameter	Symbol	Value	Unit
Peak Reverse Voltage	V_{RM}	20	V
Reverse Voltage	V_R	10	V
Mean Rectifying Current	I_O	200	mA
Peak Forward Surge Current	I_{FSM}	0.5	A
Junction Temperature	T_j	125	$^\circ\text{C}$
Storage Temperature Range	T_{stg}	- 40 to + 125	$^\circ\text{C}$

Characteristics at $T_a = 25^\circ\text{C}$

Parameter	Symbol	Max.	Unit
Forward Voltage at $I_F = 50\text{ mA}$ at $I_F = 200\text{ mA}$	V_F	0.3 0.41	V
Reverse Current at $V_R = 10\text{ V}$	I_R	20	μA

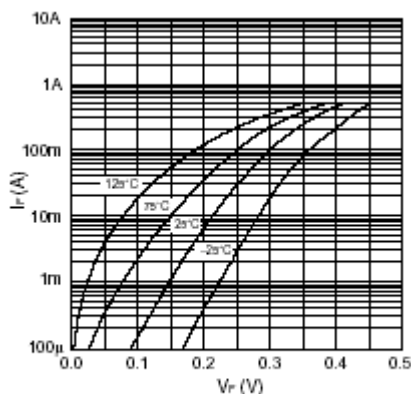


Fig.1 Forward characteristics

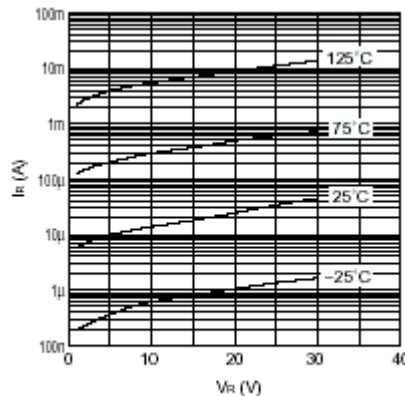


Fig.2 Reverse characteristics

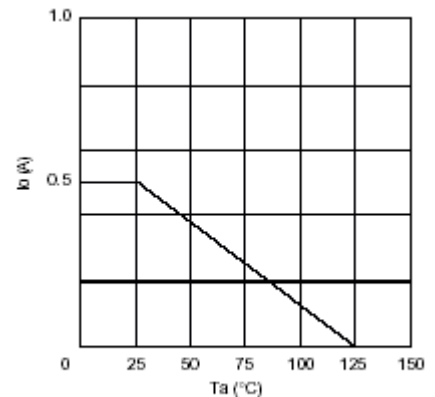


Fig.3 Derating curve



CHINA BASE
INTERNATIONAL

SOD-323



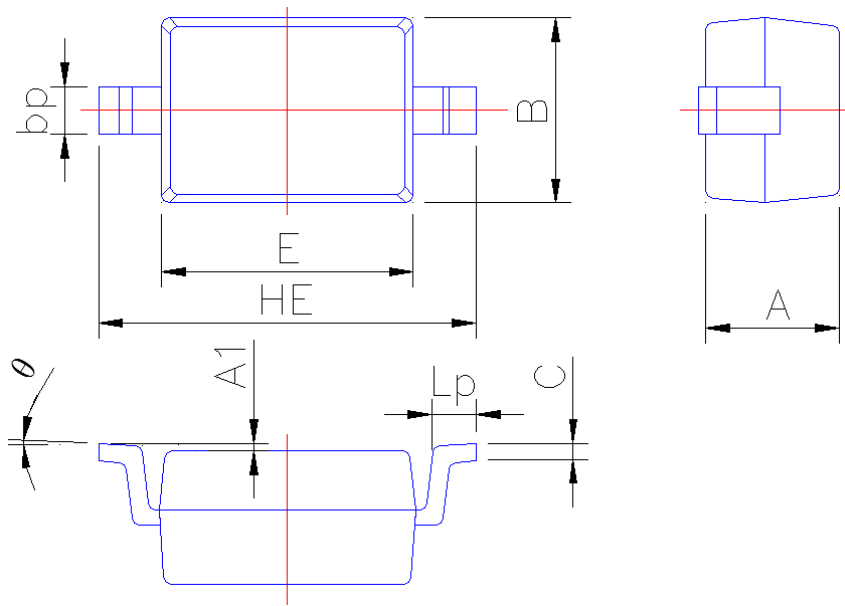
SD188SBWS

www.china-base.com.hk

PACKAGE OUTLINE

Plastic surface mounted package; 2 leads

SOD-323



Symbol	Dimension in Millimeters	
	Min	Max
A	0.95	1.15
A1	0.010	0.100
B	1.20	1.40
bp	0.25	0.40
C	0.09	0.150
E	1.60	1.80
HE	2.30	2.70
Lp	0.20	0.40
θ	0°	5°